

RECYCLING 101

# HELP KEEP THE EVERGREEN STATE GREEN

In Washington, some communities recycle over 70 percent of what they throw away. That's more than double the national average! By recycling more, we can keep even more stuff out of the landfill. Help turn waste into a **RESOURCE. PLEASE RECYCLE!**

For example, a plastic bottle can be recycled into a fleece jacket or backpack.



At home and at school, make sure you know what goes where to help reduce waste and recycle more. Paper, cardboard, glass and aluminum cans should be put in the recycling bin. What else can be recycled? Ask your parent or teacher about recycling in your community and visit **RepublicServicesNW.com** for a great guide to recycle more.

**IT ALL STARTS WITH YOU! LET'S HAVE FUN RECYCLING.**

**ACTIVITY**

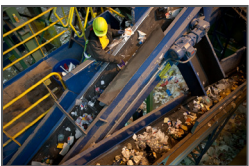
Wherever you are right now, look for five things that can be recycled and five things that might have come from recycled material.

**GLOSSARY**

|           |  |
|-----------|--|
| Green     | A color that is often used to describe the act of doing the right thing for the environment by reducing waste, recycling more and using recycled products at home and at school.   |
| Blue      | The universal color for recycling. Blue recycle bins and trucks call to mind the blue ocean, blue sky and our blue planet.   |
| Diversion | In the waste and recycling industry, diversion refers to the act of recycling waste rather than dumping it in a landfill.  |
| Earth Day | Observed on April 22, it's a day to recognize the importance of doing the right thing for our planet. Some communities celebrate Earth Day by gathering people to clean up a park or trail. What are you going to do to celebrate Earth Day this year? |
| Landfill  | A landfill is a place where waste is buried rather than recycled. Landfills can also be a source of usable materials and energy.   |

## KEEP THE RECYCLE CYCLE GOING

- Learn what goes where: Throw recyclables in the recycling bin and garbage in the trash bin
- In many communities, a giant blue recycling truck picks up recycling at the curb. That truck may run on an alternative fuel called Compressed Natural Gas. This fuel helps the truck run quietly while helping keep the air clean.
- Recyclables are dropped off at the Recycling Center. Here, recyclables such as glass, cardboard and paper are sorted and baled or packaged, so they're ready to send to manufacturers and paper mills.
- Manufacturers turn recycled material into new products for consumers. Did you know an aluminum can has the ability to be recycled an infinite number of times? That's forever and ever!
- Your parents and teachers can help support recycling by buying products made from recycled material.
- Less trash goes to the landfill each year when we all recycle more. What does go to the landfill can be turned into electricity to power homes.
- It all comes back to you! Help keep the recycle cycle going!



**There is no "away" in "throw away." It all goes somewhere. Take action today! Learn **What Goes Where** and be a star recycler.**